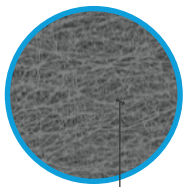


# THE ADVANTAGE MAKES THE DIFFERENCE MENARDI-LD



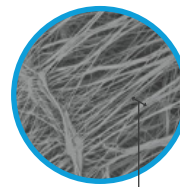
## When Operating Cost Matters, **Menardi-LD** Delivers



### Menardi LD

- ▶ Energy savings up to \$160k/year
- ▶ Reduced pore size means less clogging

Average pore size of Menardi-LD membranes

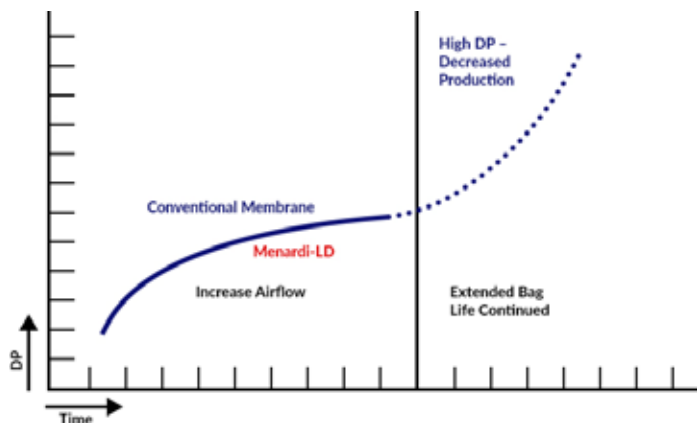


### Traditional

- ▶ Pressure drop builds faster
- ▶ Particulate embeds deeply
- ▶ Particulate remains after cleaning

Conventional membrane pore size

Excellent for “Electric Arc Furnace – EAF”, “Ferro Silica Furnace”, and other “Primary & Secondary Alloy Smelting” applications.



- ▶ Dust cake formation begins and stays on the surface.
- ▶ Tight, consistent pore structure leads to excellent dust cake shed.

Made in the USA



**(800) 321 3218**

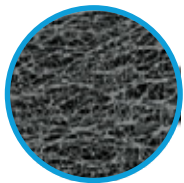
One Maxwell Drive  
Trenton SC, 29847 USA

[www.menardifilters.com](http://www.menardifilters.com)

# THE ADVANTAGE MAKES THE DIFFERENCE MENARDI-LD

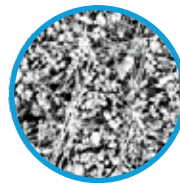
## The Menardi-LD Story

“ULTIMA” is based upon the concept of being the heaviest and toughest membrane which utilizes a minimal dust cake which does not contaminate during long term use even under high peak usage conditions. Below are two images that demonstrate the difference in particulate penetration.



### Menardi LD

- ▶ True surface filtration
- ▶ Minimal particulate remains even after prolonged use



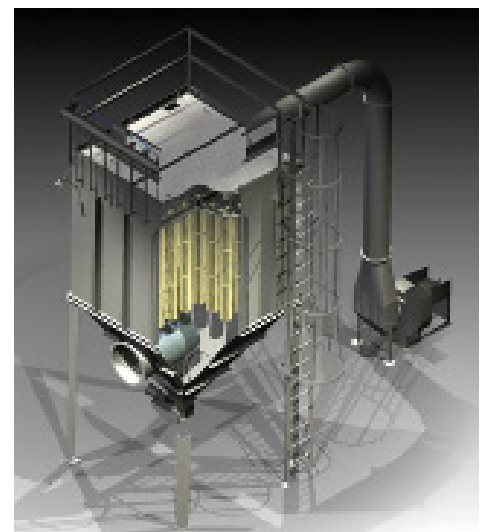
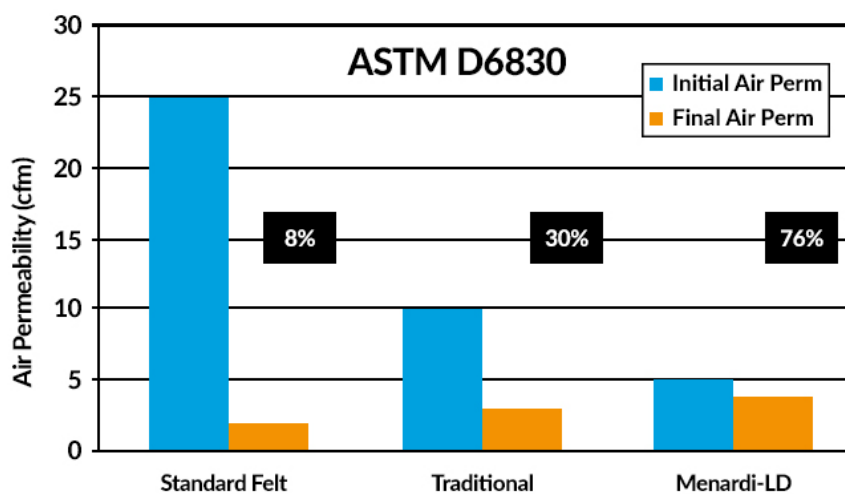
### Traditional

- ▶ Embedded particulate remains, even after cleaning cycles

## Operational Cost Savings with Menardi LD

	300,000 Total Baghouse Air Volume	500,000 Total Baghouse Air Volume
1.0" lower DP	+ \$50K	+ \$80k
2.0" lower DP	+ \$100k	+ \$160k

IMPACT OF RETAINED AIR PERMEABILITY - "DIRTY PERM"



(800) 321 3218

One Maxwell Drive  
Trenton SC, 29847 USA

[www.menardifilters.com](http://www.menardifilters.com)